



Spot Assessment 121

- Mainly Grey Box with some Forest Red Gum.
- Disturbed grassland with African Boxthorn



Spot Assessment 122

- Grey Gum, Stringybark and Narrow-leaved Apple with fairly dense Tick Bush in gully



Spot Assessment 123

- Grey Gum - Ironbark community with limited understorey and native grassland



Spot Assessment 124

- Ironbarks with a few Grey Gum
- Thinned and disturbed with few shrubs



Spot Assessment 125

- Narrow-leaved Ironbark with one Red Gum and disturbed grassland with African Boxthorn



Spot Assessment 126

- Ironbarks with a few Red Gums
- Disturbed





Spot Assessment 127

- Small patch with Grey Box, Forest Red Gum and Prickly-leaved Tea Tree



Spot Assessment 128

- Band of Ironbarks with some Grey Box and Forest Red Gum and a disturbed grassland



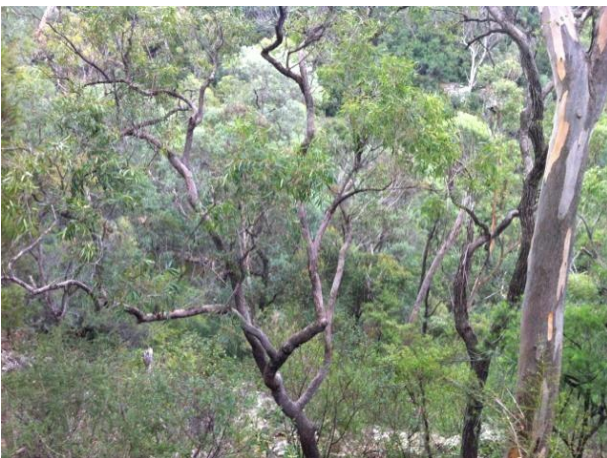
Spot Assessment 129

- Mainly Ironbarks with a small area of Scribbly Gum at the tip of the gully



Spot Assessment 130

- Scribbly Gum and Narrow-leaved Apple with dense Tick Bush all around upper slope



Spot Assessment 131

- Looking down into mesic gully.
- Grey Gum and Narrow-leaved Apple for some distance



Spot Assessment 132

- Scribbly Gum, Stringybark and Narrow-leaved Apple
- Disturbed understorey





Spot Assessment 133

- Scribbly Gum and Stringybark
- Disturbed understorey



Spot Assessment 134

- Grey Gum and Ironbark
- Disturbed understorey



Spot Assessment 135

- Grey Gum and Ironbark
- Disturbed understorey



Spot Assessment 136

- A few Forest Red Gum and Grey Box



Spot Assessment 137

- Strip of Grey Box, Forest Red Gum and Ironbark
- Disturbed grassland



Spot Assessment 138

- Grey Gum and Ironbark
- Disturbed understorey





Spot Assessment 139

- Forest Red Gum and Grey Box
- Regrowth disturbed grassland



Spot Assessment 140

- Regrowth Forest Red Gum and Grey Box



Spot Assessment 141

- Grey Gum Ironbark and a few Grey Box



Spot Assessment 142

- Grey Gum Ironbark thinned in the past



Spot Assessment 143

- Regrowth Ironbarks with few Grey Gum and areas of Tick Bush



Spot Assessment 144

- Scribbly Gum with Tick Bush downslope





Spot Assessment 145

- Ironbarks with one Grey Gum and some shrubs



Spot Assessment 146

- Narrow-leaved Apple and Grey Gum along edge of vegetation
- No Ironbarks



Spot Assessment 147

- Ironbarks thinned



Spot Assessment 148

- Ironbarks thinned with Tick Bush downslope



Spot Assessment 149

- No notes



Spot Assessment 150

- Forest Red Gum and Grey Box upslope as part of the vegetation strip





Spot Assessment 151

- Grey Gum - Ironbark thinned



Spot Assessment 152

- Facing down into Grey Gum - Peppermint mesic gully



Spot Assessment 153

- Ironbark, Grey Box and Forest Red Gum with cleared understorey



Spot Assessment 154

- Grey Gum, Rough-barked Apple and Stringybark in upper gully
- Fairly disturbed



Spot Assessment 155

- Grey Box, Narrow-leaved Ironbark and Forest Red Gum
- Disturbed understorey



Spot Assessment 156

- Grey Gum and Ironbark - thinned





Spot Assessment 157

- Mesic gully starts – with Grey Gum and Peppermint.



Spot Assessment 158

- Fenceline here demarks thinned outer paddock.
- No Grey Gum but Ironbark with scattered Forest Red Gum and Grey Box and dense Tick Bush.



Spot Assessment 159

- A bit more Forest Red Gum and Grey Box downslope/gully - thinned



Spot Assessment 160

- Ironbark, Forest Red Gum and Grey Box
- Thinned



Spot Assessment 161

- Patch of Prickly-leaved Teatree



Spot Assessment 162

- Grey Gum, Stringbark and Narrow-leaved Apple on ridge and in gully





Spot Assessment 151

- Grey Gum - Ironbark thinned



Spot Assessment 152

- Facing down into Grey Gum - Peppermint mesic gully



Spot Assessment 153

- Ironbark, Grey Box and Forest Red Gum with cleared understorey



Spot Assessment 154

- Grey Gum, Rough-barked Apple and Stringybark in upper gully
- Fairly disturbed



Spot Assessment 155

- Grey Box, Narrow-leaved Ironbark and Forest Red Gum
- Disturbed understorey



Spot Assessment 156

- Grey Gum and Ironbark - thinned





Spot Assessment 157

- Mesic gully starts – with Grey Gum and Peppermint.



Spot Assessment 158

- Fenceline here demarks thinned outer paddock.
- No Grey Gum but Ironbark with scattered Forest Red Gum and Grey Box and dense Tick Bush.



Spot Assessment 159

- A bit more Forest Red Gum and Grey Box downslope/gully - thinned



Spot Assessment 160

- Ironbark, Forest Red Gum and Grey Box
- Thinned



Spot Assessment 161

- Patch of Prickly-leaved Teatree



Spot Assessment 162

- Grey Gum, Stringbark and Narrow-leaved Apple on ridge and in gully





Spot Assessment 163

- Upper ridge is rocky with Narrow-leaved Apple and Tanton overhang



Spot Assessment 164

- Gully with Grey Gum and Narrow-leaved Apple - not really mesic here (no Grey Myrtle)



Spot Assessment 165

- Dense Tick Bush and Ironbark upslope



Spot Assessment 166

- Facing downslope – Forest Red Gum extends down into Tick Bush



Spot Assessment 167

- Just Ironbark and Tick Bush



Spot Assessment 168

- Forest Red Gum - Ironbark from here to road
- Can see Grey Gum downslope.
- All around is Broad-leaved and Narrow-leaved Ironbark with Tick Bush.





Spot Assessment 169

- Upper edge of Grey Gum, Stringybark, Narrow-leaved Apple and Scribbly Gum



Spot Assessment 170

- Upper edge of gully with Grey Gum and Peppermint



Spot Assessment 171

- Broad-leaved and Narrow-leaved Ironbark with dense Tick Bush



Spot Assessment 172

- Ironbark, but no Grey Gum really



Spot Assessment 173

- Grey Gum - Ironbark



Spot Assessment 174

- Grey Gum, Stringybark, Narrow-leaved Apple meets Ironbark





Spot Assessment 175

- Grey Gum Narrow-leaved Apple and Stringybark along upper edge of gully



Spot Assessment 176

- Peppermint comes right up gully



Spot Assessment 177

- Grey Gum, Stringybark and Narrow-leaved Apple comes further up gully with some Ironbarks at upper edge



Spot Assessment 178

- All Grey Gum - Stringy not Ironbark



Spot Assessment 179

- Grey Gum – Narrow-leaved Apple up gully



Spot Assessment 180

- Patch of Grey Gum - Ironbark





Spot Assessment 181

- Grey Gum, Stringybark and Narrow-leaved Apple to edge



Spot Assessment 182

- Some Grey Gum - Ironbark along edge



Spot Assessment 183

- Possibly add as patch of Grey Box - Forest Red Gum – Ironbark



Spot Assessment 184

- Ironbark - Stringybark



Spot Assessment 185

- Ironbark and Stringybark with some Grey Box and Forest Red Gum
- Open and grassy



Spot Assessment 186

- Ironbark and Stringybark with dense Cassinia
- Small patch of Woollybutt upslope





Spot Assessment 187

- Grey Gum, Narrow-leaved Apple and Stringybark



Spot Assessment 188

- Peppermint starts



Spot Assessment 189

- Peppermint gully - a bit mesic but quite open with a flat rocky bed



Spot Assessment 190

- Some Red Bloodwood on slope



Spot Assessment 191

- Scribbly Gum and Red Bloodwood with Tick Bush and Tantoon - on top of ridge



Spot Assessment 192

- Stringybark and Ironbark upslope





Spot Assessment 193

- Scribbly Gum, Grey Gum and Red Bloodwood



Spot Assessment 194

- Scribbly Gum and Bloodwood



Spot Assessment 195

- Peppermint comes up gully



Spot Assessment 196

- Grey Gum and Narrow-leaved Apple



Spot Assessment 197

- Riparian vegetation with Grey Gum, Peppermint and Rough-barked Apple



Spot Assessment 198

- Grey Gum RB Apple.
- No Peppermint





Spot Assessment 199

- Upslope is Red Gum and Stringybark



Spot Assessment 200

- Facing east is Grey Gum, Stringybark and Ironbark



Spot Assessment 201

- Facing south along the slope is Grey Gum and Ironbark in dense She-oak Forest



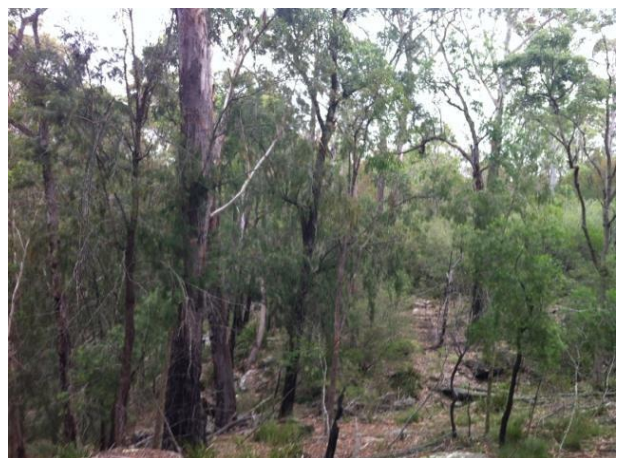
Spot Assessment 202

- Drop off with Blackbutt and She-oak



Spot Assessment 203

- Facing southeast into the creek with Peppermints



Spot Assessment 204

- Peppermint gully, Blackbutt along gully top, Grey Gum, Ironbark and Tick Bush upslope





Spot Assessment 205

- Facing north in creek bed, showing the Peppermint vegetation



Spot Assessment 206

- Facing southwest.
- Still Peppermint in creek with Blackbutt on slopes



Spot Assessment 207

- Blackbutts to top of gully
- Tick Bush, Grey Gum and Ironbark above gully

No photo

Spot Assessment 208

- Facing east into dense She-oak with mainly scattered Grey Gum and Stringybark



Spot Assessment 209

- Dense Tick Bush, Grey Gum and Stringybark downslope
- Open Red Gum - Stringybark upslope along road



Spot Assessment 210

- Dense Tick Bush downslope





Spot Assessment 211

- Facing south into the Red Gum vegetation



Spot Assessment 212

- Facing south into Stringybark, Forest Red Gum, Wattle, She-oak and Tick Bush



Spot Assessment 213

- Glossy Black Cockatoo chew cones



Spot Assessment 214

- Facing east into open forest of Grey Gum, Stringybark and Ironbark with Wattles, She-oak and a grassy groundcover



Spot Assessment 215

- Trim Greenhood



Spot Assessment 216

- Termite mound – potential goanna habitat





Spot Assessment 217

- Glossy Black Cockatoo chew cones



Spot Assessment 218

- Glossy Black Cockatoo chew cones



Spot Assessment 219

- Glossy Black Cockatoo chew cones



Spot Assessment 220

- Grey Gum, Stringybark and Ironbark
- Slope is dense with She-oak and Tick Bush



Spot Assessment 221

- The creek at the northeastern corner of the Peel Street site
- Creek approximately 10m by 1.5m



Spot Assessment 222

- Peppermint vegetation across the gully





Spot Assessment 223

- Nodding Greenhood (with closed flower)
- Peppermints also come up to the top of the gully



Spot Assessment 224

- Narrow-leaved Apple, Red Bloodwood, Stringybark, with Flaky-barked Tea-tree and Tick Bush heath



Spot Assessment 225

- Grey Gum, Ironbark and Stringybark



Spot Assessment 226

- Peppermint coming up the top of the gully here



Spot Assessment 227

- Termite mound – potential goanna habitat



Spot Assessment 228

- Facing down the gully
- Possible Grey Gum, Stringybark and Narrow-leaved Apple band – a few Narrow-leaved Appled





Spot Assessment 229

- Creek in the southeastern corner of Peel Street site.
- Creek is rocky with flow about 1m by 0.5m.
- No Peppermint but Rough-barked Apple - Probably lost Peppermint at last bend.



Spot Assessment 230

- Facing west there is dense Tick Bush, Stringybark and Ironbark



Spot Assessment 231

- Facing north along track; to the west is Tick Bush, Wattle and She-oak and to the east is Grey Gum Stringybark and Ironbark



Spot Assessment 232

- Facing north with dense Tick Bush to west and dense She-oak to east.



Spot Assessment 233

- Wombat burrow with poo



Spot Assessment 234

- Facing southwest into Grey Box and Red Gum





Spot Assessment 235

- Facing southeast into open Grey Box - Forest Red Gum woodland with dense Weeping Grass



Spot Assessment 236

- Facing west showing Grey Box - Stringybark with scatters and patches of Blackthorn, Wattle and She-oak in native grassland



Spot Assessment 237

- Facing north showing Kangaroo Grass with scatters and patches of Tick Bush, Wattle, She-oak and other shrubs (*M. styphelioides*, *Hakea sericea*)



Spot Assessment 238

- Facing west into Forest Red Gum - Grey Box vegetaion



Spot Assessment 239

- Dense She-oak, Stringybark and Tick Bush at this location



Spot Assessment 240

- Facing east into dense Tick Bush with Stringybark, Wattle and She-oak





Spot Assessment 241

- Facing west is an open area along the Peel Street site boundary with Stringybark Narrow-leaved Geebung, and a grassy sedgey groundcover



Spot Assessment 242

- Facing north
- Just walked the Tick Bush edge with meander



Spot Assessment 243

- Facing south, showing termite mound with dense She-oak and scattered Stringybark down to creek



Spot Assessment 244

- No canopy in western direction from about here



Spot Assessment 245

- Native grassland with scatters and patches of Wattle, Blackthorn and She-oak



Spot Assessment 246

- Disturbed Swale passes through northwestern corner of the Peel Street site





Spot Assessment 247

- Facing west showing the drainage swale continuing onto the adjoining property



Spot Assessment 248

- Limited to no trees in the western end of the Peel Street site



Spot Assessment 249

- One or two regrowth Forest Red Gum in the southwestern corner of the Peel Street site



Spot Assessment 250

- Facing east showing a few Forest Red Gum and Grey Box starting and continuing to the east



---

---

*Appendix E*

'Over-the-Fence' Assessments (SLR  
Consulting)

---

---





Spot Assessment 1

- Forest Red Gum - Grey Box - Ironbark strip



Spot Assessment 2

- Forest Red Gums along drainage ditch
- Limited understorey and exotic grasses



Spot Assessment 3

- Exotic pasture with a few Forest Red Gums along drainage ditch



Spot Assessment 4

- Forest Red Gum - Grey Box with scattered native understorey, regrowth eucalypts and disturbed ground cover. Probably native groundcover but scattered and patchy.



Spot Assessment 5

- Forest Red Gum - Ironbark with disturbed native understorey



Spot Assessment 6

- Forest Red Gum with native understorey